



TO LET
Retail Unit 2
800 sq.ft
(74.3 sq.m)

TO LET

Hays Travel

M UNIT 2

Palmerston Road
Southsea, Hampshire
Portsmouth, PO5 3QH

Local Occupiers Include

Specsavers

TESCO

COSTA

Boots

PALMERSTON ROAD

UNIT 2

DESCRIPTION

The property is situated in the heart of Southsea in a prime retailing position on the western side of Palmerston Road, which is fully pedestrianised.

- Prime retailing position in Southsea
- Public car parking nearby
- Tenants include Specsavers, Costa, Waitrose, Boots, WH Smiths, and Tesco Express

AREAS (Approx. Gross Internal)

Sales Area	800 sq.ft	(74.3 sq.m)
TOTAL	800 sq.ft	(74.3 sq.m)

RENT

Rent £20,000 +VAT.

BUSINESS RATES

Rates to be re-assessed.

SERVICES

All mains services are available.

SERVICE CHARGE & INSURANCE

Service Charge and Insurance: £690 per annum +VAT.

ENERGY PERFORMANCE

Further information available upon request.

PLANNING

Subject to planning. It is the ingoing tenant's responsibility to verify that their intended use is acceptable to the Local Planning Authority.

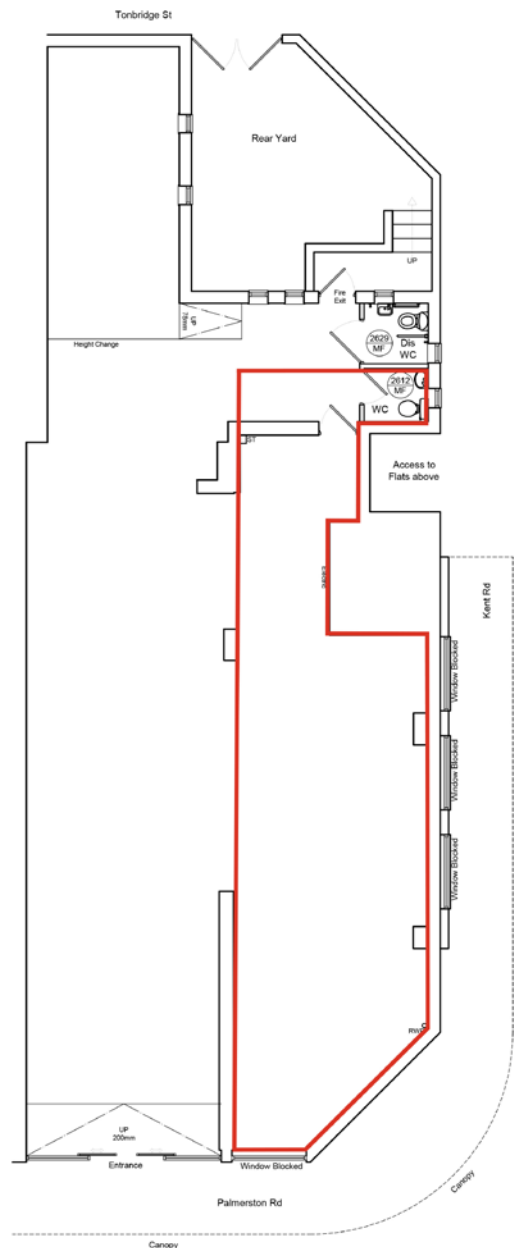
LEGAL COSTS

Each party is responsible for their own legal costs in connection with the granting of a lease.

VAT

VAT is payable on all sums due to the landlord under the terms of the lease.

FLOOR PLAN



17

Retail Units On-Site



42,802 sq.ft

Total Area



What Three Words
paper.normal.hats

PALMERSTON ROAD

SITE PLAN



George Watson

01384 400123
07423 662 487
GWatson@cpproperties.co.uk

Viewing
Strictly via prior appointment
with the appointed agents:



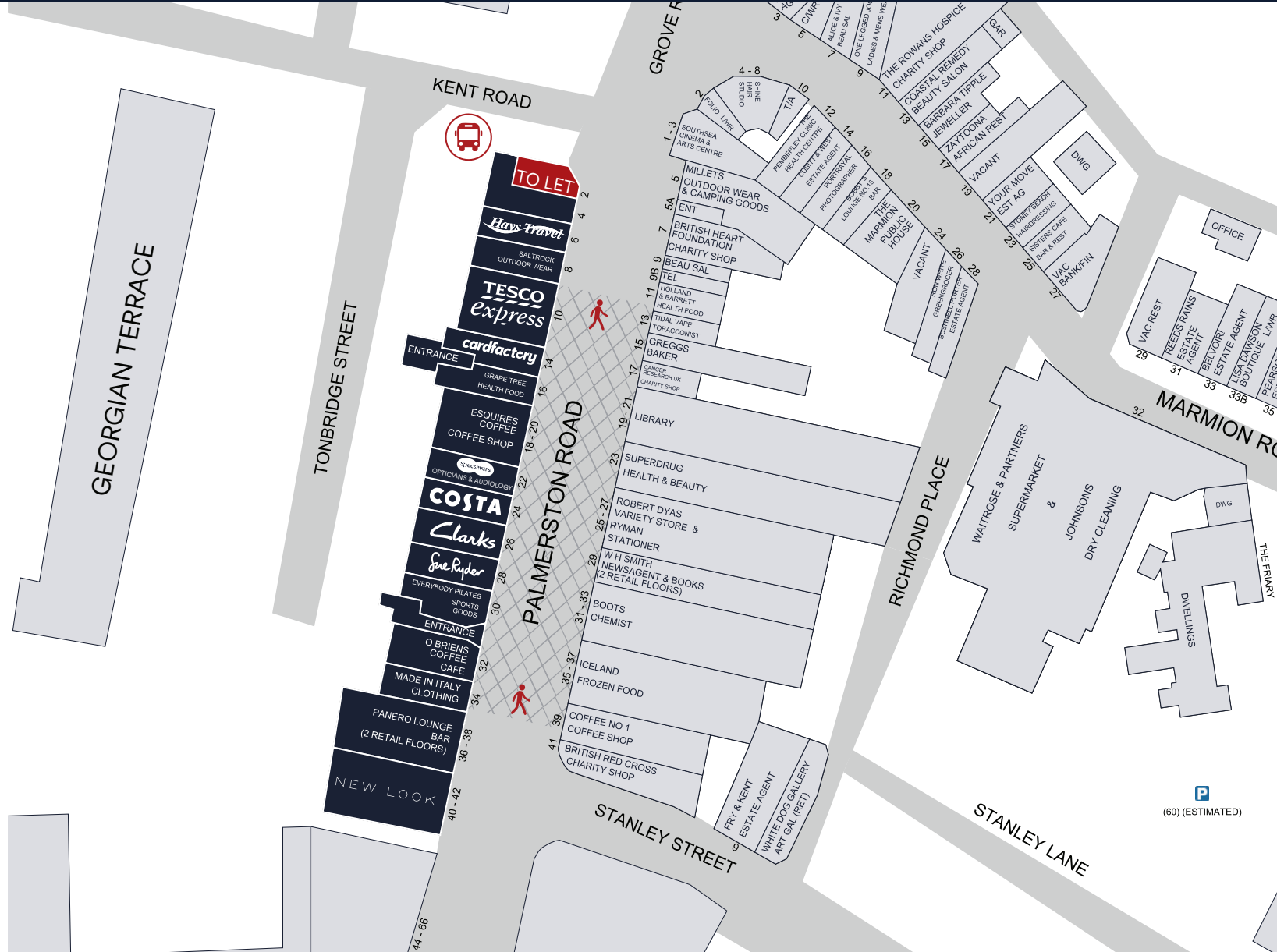
Josh Gettins

07545 846 799
j.gettins@flude.com

Creative Retail

Scott Robertson

07831 856 733
scott@creative-retail.co.uk



MISREPRESENTATION ACT, 1967 London & Cambridge Properties Limited (Company Number 02895002) the registered office of which is at LCP House, Pennant Estate, Kingswinford, West Midlands DY6 7NA its subsidiaries (as defined in section 1156 of the Companies Act 2006) associated companies and employees ("we") give notice that: Whilst these particulars are believed to be correct no guarantee or warranty is given, or implied therein, nor do they form any part of a contract. We do our best to ensure all information in this brochure is accurate. If you find any inaccuracies, please let us know and where appropriate, we will correct it. We make no representation that information is accurate and up to date or complete. We accept no liability for any loss or damage caused by inaccurate information. This brochure gives a large amount of statistical information and there will inevitably be errors in it. Intending purchasers or tenants should not rely on the particulars in this brochure as statements or representations of fact but should satisfy themselves by inspection or otherwise as to the correctness of each of them. We provide this brochure free of charge and on the basis of no liability for the information given. In no event shall we be liable to you for any direct or indirect or consequential loss, loss of profits, revenue or goodwill arising from your use of the information contained herein. All terms implied by law are excluded to the fullest extent permitted by law. No person in our employment has any authority to make or give any representation or warranty whatsoever in relation to the property. SUBJECT TO CONTRACT. We recommend that legal advice is taken on all documentation before entering into a contract. You should be aware that the Code of Practice on Commercial Leases in England and Wales strongly recommends you seek professional advice from a qualified surveyor, solicitor or licensed conveyancer before agreeing or signing a business tenancy agreement. The Code is available through professional institutions and trade associations or through the website <https://www.ncs.org.uk/upholding-professional-standards/sector-standards/real-estate/code-for-leasing-business-premises-1st-edition/>. LCP's privacy notices that apply to its use of your personal information are at www.lcpgroup.co.uk/policies. The privacy notice that applies to you will depend on the nature of your relationship with LCP, and in some cases more than one may apply to you. LCP's privacy policy giving a high level overview of how LCP approaches data protection and your personal information can be found at www.lcpproperties.co.uk/uploads/files/LCP-Privacy-Web-and-Data-Policy-May-2018.pdf.